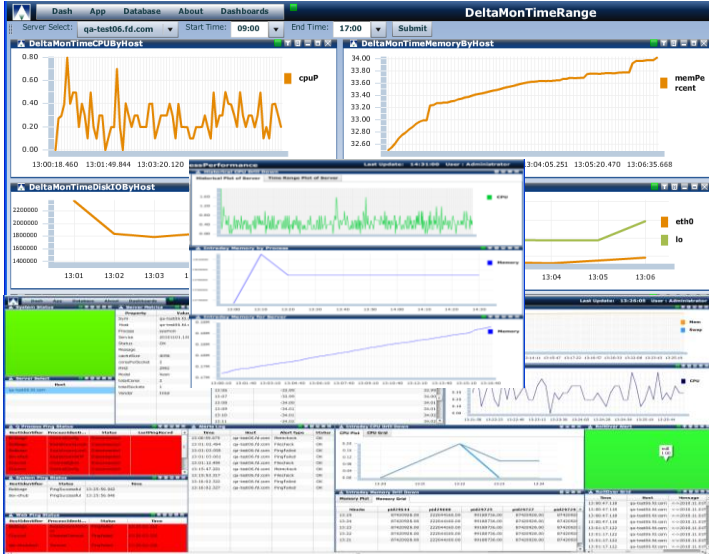


The First Derivatives Delta Monitoring product has been designed to monitor hardware performance across global organisations in real-time.

The product monitors hardware metrics such as CPU and RAM every few seconds, across thousands of distributed servers, and compares the values against historic levels to predict potential hardware failures in real-time.



Key Features:

- Real Time Monitoring of system and user applications
- Configurable alerts based on pre-defined thresholds so you can identify and fix problems before they impact business
- Ability to provide detailed analytics reports and interactive data analysis
- Store and analyse Historical performance metrics
- Completely customisable user perspective within a single, comprehensive solution
- Process high volumes of underlying technical events

Enterprise Features:

- Entitlements
- Easy to use toolkit provides users with a centralised mechanism for all aspects of data management
- Centralised Analytic Library allows users access to a large set of custom developed analytics from a single location
- User friendly front end allows user to develop complex analytics from a centralised location and deploy across multiple data engines
- Comprehensive logging and audit trail
- Development Sandbox
- Built in Failover and Recovery
- Monitoring (including CPU monitoring)
- Scalability (multiple streams such that a single Tickerplant doesn't become a bottleneck)

Key Benefits:

- Quickly identify performance problem and avoid backlogs
- Stabilize poorly performing applications
- Improve and streamline capacity planning
- Maximise uptime of key applications
- Customise key performance indicators (KPIs) used to provide assurance and visibility of activity and performance
- Proactively identify where the problems reside

First Derivatives provides a POC for qualifying prospects. Our approach goes beyond the conference room staged demonstration with the following aspects covered:

- Market Connectivity/Feedhandlers
- Data Loading
- Application Integration
- Integration of external code Incorporate external DLLs and libraries
- Real-time P/L and Risk Management
- Full suite of reporting tools

For further information on this and the Delta range of products please contact: deltaproducts@firstderivatives.com