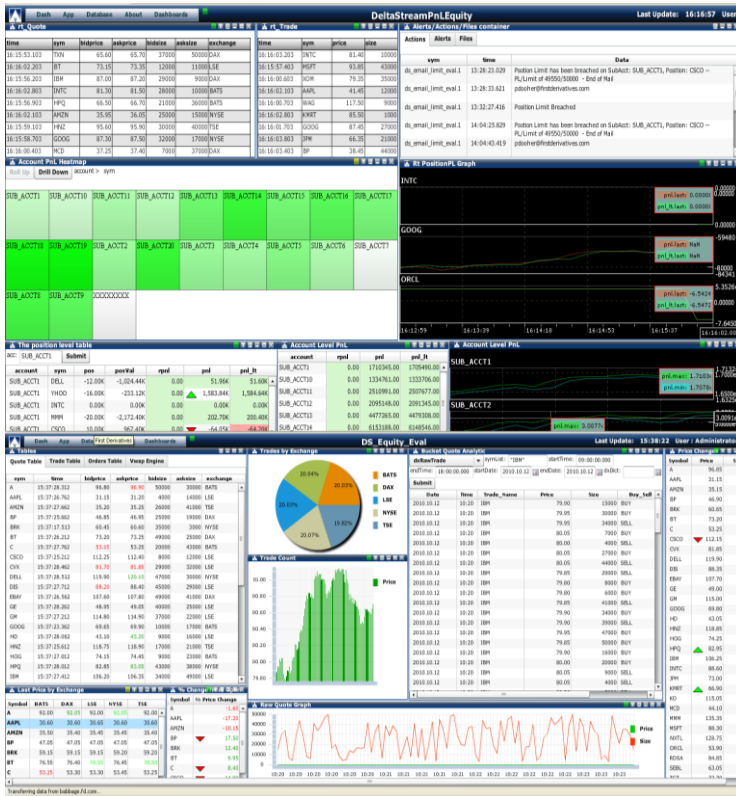




Delta Stream is the leading production ready Market Data and CEP platform.

Delta Stream is designed to enable users to capture, store and analyse large volumes of data within a single platform. It provides users with the framework to develop and deploy customised analytics that quickly perform complex calculations on large volumes of underlying market data, capturing real time market data and allowing unlimited historical storage of this data. Typical applications might include the development of real time analytic engines (eg, real time PL engines, customised vwap engines), trade cost analysis (TCA) tools, data repository for equity research teams and compliance tools.



Key Features

- Powered by the market leading kdb+ database technology, delivers unrivalled functionality and performance
- Rich real-time streaming and polling visualisation capabilities via Delta Dashboards
- A Process Library containing a rich set of highly optimized boiler plate q processes: enabling:
 - **Real-time Engines** – easily configurable CEP processes.
 - **Tick Capture and Storage Engines** – that enable the high-speed capture and querying of intra-day and historical data.
 - **Query Gateways** – processes that optimize the real-time streaming of data and provide a single point of access for real-time and historic querying
 - **File Loader Engines** – configured with watch lists of files for normalizing and loading
 - **External Bridges** – high-performance adaptors to external systems.
 - **Alerting Engines** – that enables alerts and email notifications
 - An Analytics Library containing discrete business logic and runtime analytics that can be injected into any process.

Key Benefits:

- **Performance** – harnesses the power of Kdb+ to provide an incredibly fast data processing platform.
- **Speed Of Deployment** – provides all the key components of a high performance data processing system out of the box.
- **Scalability** – the discrete engine architecture of Delta Stream ensures that processes can be configured instantly to share the workload.
- **Protection of Investment** – protects the investment that clients make in a high-end data processing system by ensuring that the key business logic is easily accessible and extendable by personnel
- **Maintainability** – provides the fully audited change controlled central repository for all boiler plate code, business logic, analytics, configurations and scheduling.
- **Platform Management** – provides the central control hub for all aspects of platform management and deployment.
- **Permissioning** – provides full granular permissioning of all components and ensures a full audit log is kept of access to all components.
- **Best of Class Enhancements** - clients continually benefit from the ongoing development of new boiler plate Processes and Analytics by the Delta Development

Enterprise Functionality:

- Permissions - Entitlement checking and permissioning at data and entity levels
- Logging and Diagnostics - Standardised logging and internal stats generation
- Messaging - Topic centric discovery and routing and robust IPC abstraction
- Centralized Configuration - Centralized configuration parameter management
- Scheduling and Workflow - Built in scheduler and workflow management
- Failover and Replication - Methods for enabling Hot-Hot and Hot-Warm failover capabilities
- Alerting and Notifications - A standard alerting framework
- Error Handling - Comprehensive and standardised error handling

First Derivatives provides a POC for qualifying prospects. Our approach goes beyond the conference room staged demonstration with the following aspects covered:

- Market Connectivity/Feedhandlers
- Data Loading
- Application Integration
- Integration of external code Incorporate external DLLs and libraries
- Real-time P/L and Risk Management
- Full suite of reporting tools

For further information on this and the Delta range of products please contact: deltaproducts@firstderivatives.com